

Composite heater



The device is designed to heat the assembly in the vacuum chamber using the tip of the tape heater.

The design of the heater makes it possible to assemble from two heater sections with a length of up to 600 mm:
version -10 and version -06.

The heater is prepared for operation in "hot conditions", the spirals are twisted into a special screen.

Case, water heater - cooler.

Composite heater Parameters



Parameters

Maximum power

2.5 kW

Maximum current

160 A

Weight

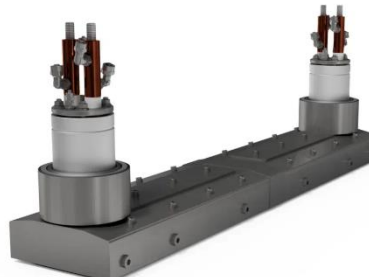
9 kg

Working temperature

50-350 ° C

Minimum consumption
coolant

not less than 1.5 l / min



Composite heater

